

# NEBULA

## NEBULA

For FAQs and more information, please visit:

**[www.SeeNebula.com](http://www.SeeNebula.com)**

✉ [support@SeeNebula.com](mailto:support@SeeNebula.com)

☎ +1 (800) 988 7973 (US) Mon-Fri 9:00am - 5:00pm (PT)  
+44 (0) 1604 936200 (UK) Mon-Fri 6:00 - 11:00 (GMT)  
+49 (0) 69 9579 7960 (DE) Mo-Fr 6:00 - 11:00  
+81 03 4455 7823 (日本) 月 - 金 9:00 - 17:00

©Anker Innovations Limited. All rights reserved. NEBULA and the NEBULA logo are trademarks of Anker Innovations Limited, registered in the United States and other countries. All other trademarks are the property of their respective owners.

Model: D2421

V01



## Nebula Capsule II User Manual

English	01
Deutsch	27
Español	51
Français	75
Italiano	99
Português	123
简体中文	147
日本語	166
한국어	190
العربية	211

## Table of Contents

02	Safety Instructions
05	What's Included
05	Overview
10	Getting Started
13	Powering the Nebula Capsule II with Android TV™
14	Settings
17	Using Nebula Capsule II
21	Specifications
22	Troubleshooting
23	Notice
26	Trademarks
26	Warranty

## Safety Instructions

Read all instructions before you use this device. Do not make any changes or create settings that are not described in this manual. If physical injury, loss of data or damage is caused by failure to follow instructions, the warranty does not apply.

### Setup

- To reduce the risk of fire and / or electric shock, do not expose the device to rain or moisture. Objects filled with liquids, such as vases, should not be placed on this device.
- Do not place this device on soft surfaces such as tablecloths or carpets, otherwise the device could be a fire hazard.
- Do not place this device in areas susceptible to excessive dust and dirt or near any appliance generating a strong magnetic field.
- To prevent overheating, do not block or clog the ventilation openings.
- Never place this device in a confined space. Always leave enough space around this device for ventilation.
- Protect this device from overexposure to direct sunlight, heat, large temperature fluctuations, and moisture. Avoid extreme temperatures. The suitable operations and storage temperature for this device and its accessories is 0°F to 95°F / 0°C to 35°C.
- When this device is running for a long period of time, the surface may become hot. Shut it down immediately and unplug the charger. Resume operation after this device has cooled down.
- Always handle this device with care. Avoid touching the lens. Do not allow children to handle the device without supervision.
- Never place heavy or sharp objects on this device.
- To avoid electric shock, do not disassemble.
- Use attachments or accessories specified by the manufacturer only.
- Avoid extreme vibrations as they may damage the internal components.

### Hearing Safety

- To prevent hearing damage, do not listen for extended periods at high volume. Set the volume to a safe level.

### Charging

- The charger type is an A2014 with output voltage / current of DC 15V / 2A. The plug comes as a separate piece from the adaptor. The charger should be installed near this product and should be easily accessible.
- This charger is for indoor use only.
- When charging, place this device in an environment that has a normal room temperature (ranges from 41°F to 77°F / 5°C to 25°C recommended) and good ventilation.
- Due to the enclosure material used, this device shall only be connected to a USB interface of version 2.0 or higher. The connection to so called power USB is prohibited.

### Battery

- Do not replace the built-in battery yourself. Contact an authorized service center to replace it.
- Risk of explosion! Keep batteries away from heat, direct sunlight, or fire. Never dispose of batteries by burning.
- Batteries contain chemical substances and they should be disposed of properly.
- Charge this device regularly. Do not store this device with a completely discharged battery.
- The remote control comes with two AAA batteries, which can be swallowed. Keep the remote control out of reach of children.
- Remove the battery when the remote control will not be used for a long period of time.
- Replace the remote control batteries only with the same or an equivalent type.

## Cleaning

- Use a soft, lint-free cloth. Never use liquid, gaseous, or easily flammable cleansers to clean.
- Do not use any liquid cleaning agents to clean the lens to avoid damaging the coating film on the lens. Use lens cleaning paper to clean the lens.

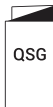
## Repairs

- Do not make any repairs to this device yourself. Only have your device repaired by an authorized service center.
- Improper maintenance can result in injuries or damage to this device.
- Refer all servicing to qualified service personnel.

## Caution

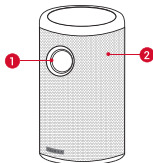
- Possible hazardous optical radiation emitted from this device.
- Do not stare at the operating beam. The bright light may damage your eyes.

## What's Included



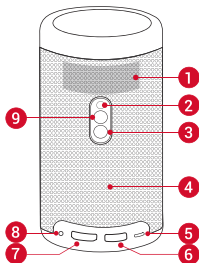
## Overview


### 1. Front View



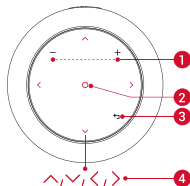
- 1 Lens
- 2 Air ventilation (inlet)

## 2. Rear View



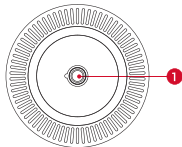
- 1 Air ventilation (outlet)
- 2 Infrared receiver
- 3 Power button
  - Press and hold for 2 seconds to power on / off
- 4 Speaker
- 5 USB-C port
  - Connect to power supply (with supplied cable)
- 6 USB port
  - Connect to a USB flash drive
- 7 HDMI input port
  - Connect to a playback device
- 8 AUX-out socket
- 9 
  - Press to switch between Bluetooth speaker mode and projector mode
  - Bluetooth speaker power on / off

## 3. Top View



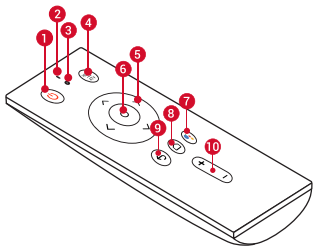
- 1 Volume up / down
- 2 Confirmation button
- 3 Return button
- 4 Navigation buttons
  - Touch to go to the next / previous page

## 4. Bottom View



- 1 Tripod socket

## 5. Remote Control



- 1 Power on / off button
- 2 Microphone
- 3 LED indicator
- 4 Signal source switch button
  - Press to switch between Android TV™ and HDMI interfaces
  - Press and hold for 3 seconds to engage manual focus
- 5 Navigation buttons
  - Navigate menus or adjust the selected contents
- 6 Confirmation button
  - Press to confirm a selection or entry
  - Pause / resume play
- 7 The Google Assistant button
  - Press to talk to the Google Assistant (can be used only after Bluetooth pairing is successful)

- 8 Home button
  - Press to access the home menu
- 9 Return button
  - Return to the previous menu
- 10 Volume up / down button

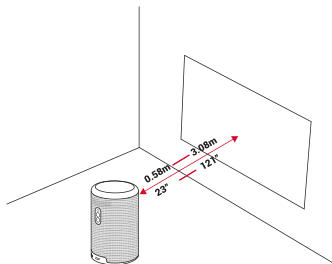
## LED Indication

LED Status	Description
Solid white	Operating in projector mode
Flashing blue	Ready to pair / Bluetooth pairing (Bluetooth speaker mode)
Solid blue	Bluetooth connected (Bluetooth speaker mode)
Flashing red	Low battery
Solid red	Charging
Solid green	Fully charged

## Getting Started

### 1. Placement

Place this device on a stable, flat surface, and squarely point it to face the projection surface. For best results, the projection surface should be white and flat. The distance between this device and the projection surface must be a minimum of 23 inches (0.58 meters) and a maximum of 121 inches (3.08 meters) to get a projection image from 20 to 100 inches.



- It is unnecessary to tilt it towards the projection surface. You can correct the projection image with the built-in keystone correction.
- The distance between the device and the projection surface determines the projection image size. For the best result, set the projector between 40 and 80 inches away.

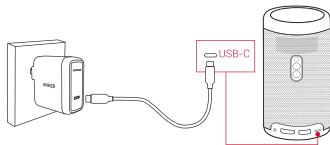
### 2. Prepare the Remote Control

The remote control comes with two AAA batteries.

- ① For first time use, slide to open the battery compartment, and install two AAA batteries.
- ② To replace the battery, unlock and open the battery compartment, insert a new battery matching the polarity (+/-) as indicated, and then close and lock the battery compartment.

### 3. Get Started

- ① Fully charge the built-in battery before using for the first time by using the provided cable and charger.



- ② Hold ① on the projector for 2 seconds to turn it on.
- ③ Angle the device towards a suitable projection surface or wall.
- ④ To focus the image, slightly move the projector to engage autofocus. Or you can press and hold (F) for 3 seconds to manually adjust the focus.
- ⑤ For first time use, follow the on-screen instructions to complete the basic setup.



- To give your Nebula Capsule II the fastest, safest charge, use the supplied charger only.

## 4. Nebula App

To easily control this device, we recommend downloading the dedicated Nebula app, Nebula Connect. By using this app, you can use the screen as a mouse.

- 1 Download the **Nebula Connect** app from the App Store (iOS devices) or Google Play (Android devices).



- 2 Enable Wi-Fi on your smartphone and select **[Nebula Capsule II]** as the device to be connected.

Note: Make sure your phone and Nebula Capsule II are connected to the same Wi-Fi network.

- 3 Open the **Nebula Connect** app and follow the on-screen instructions to complete connection setup.

## Powering the Nebula Capsule II with Android TV™

Follow the on-screen instructions to complete the setup process.

### Option 1. Quick setup

Android phone users can follow the instructions to quickly set up Android TV with your Android phone.

### Option 2. Set up Nebula Capsule II

For iOS users, follow the instructions to complete the process.

- 1 Skip the quick setup process.
- 2 Connect Nebula Capsule II to the network.
- 3 Sign in with your Google account.

Your Nebula Capsule II will be powered by Android TV after finishing the setup process.

## Settings

Go through the setup process when you turn on Nebula Capsule II for the first time.

### 1. Network

This device can be connected to the Internet via a wireless (Wi-Fi) connection.

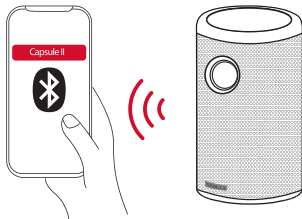
- 1 Press to open the home menu, select **[Settings]** > **[Network & Internet]** and press .
- 2 Follow the on-screen instructions to complete the network connection.

### 2. Bluetooth

#### Bluetooth Speaker Mode

You can use Capsule II as a standalone Bluetooth speaker.

- 1 Press to switch to Bluetooth speaker mode.
- 2 Enable Bluetooth on your smartphone and select **[Capsule II]** as the device to be connected.





Note: Before using this projector as a standalone speaker, make sure the remote control is connected to this projector via Bluetooth.





## Projector Mode

You can connect Bluetooth headphones or a speaker to Capsule II while in projector mode.

- Press  to access the home menu, select **[Settings]** > **[Remotes & Accessories]** and press .
- Select **Add accessories**.
  - The projector will begin searching for accessories.
- Follow the on-screen instructions to complete the Bluetooth connection.


Note: Before pairing your Bluetooth devices, make sure they are in pairing mode.

## 3. Projector

Press  to access the home menu, select **[Settings]** > **[Projector Settings]**, and press .

<b>[Image mode]</b>	<b>[Auto] / [Standard mode] / [Battery mode]</b>
<b>[Color temperature]</b>	<b>[Normal] / [Cool] / [Warm]</b>
<b>[Auto keystone correction]</b>	Enable / disable auto keystone correction.
<b>[Auto focus correction]</b>	Enable / disable auto focus correction.
<b>[Manual focus correction]</b>	Press <b>Enter</b> to manually correct focus.
<b>[Update version]</b>	Press <b>Enter</b> to update firmware version.

## 4. Apps

- On the home menu, select **[Settings]** > **[Apps]**, and press .
- Select an app and check the current version, open or force stop, check the storage used, clear data or cache, or enable or disable notifications and permissions.

## 5. Others

On the home menu, select **[Settings]** to find more setting options.

<b>[Device Preferences]</b>	
<b>[Date &amp; time]</b>	Manually set the date and time.
<b>[Language]</b>	Select the on-screen language.
<b>[Keyboard]</b>	Select the keyboard language type you want to use.
<b>[Sound]</b>	Select the audio output source and sound format.
<b>[Storage]</b>	Check the device storage and removable storage.
<b>[Reset]</b>	All data from your device's internal storage will be erased.
<b>[Date&amp;Time]</b>	
<b>[Automatic date &amp; time]</b>	Enable or disable automatic date and time.
<b>[Set date]</b>	Manually set date.
<b>[Set time]</b>	Manually set time.
<b>[Set time zone]</b>	Set time zone.
<b>[Use 24-hour format]</b>	Enable or disable 24-hour format.

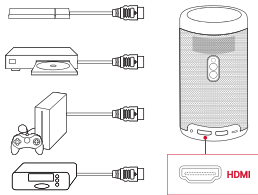
## Using Nebula Capsule II


### 1. Play from HDMI Playback Devices

Nebula Capsule II can be connected to various HDMI playback devices such as a TV box, TV stick, DVD player, set-top box (STB), gaming consoles, or other devices.

Choose one of the following three options to play from devices that have an HDMI output port:

- Connect Nebula Capsule II to an HDMI playback device with an HDMI cable (not included).
  - It will automatically start HDMI playback once connected to an HDMI playback device.



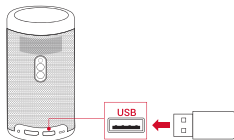
- Press the  button on the remote control to switch between Android TV and HDMI interfaces.
- On the home menu, go to **[Settings] > [HDMI]** and follow the on-screen instructions to complete connection process.



### 2. Play from a USB Drive

With Nebula Capsule II, you can enjoy music, video, and pictures that are stored on a USB drive.

To play from a USB drive:

- Download the ES File Explorer from Google Play.
- Insert a USB drive into the USB port.
  - The USB folder will appear on the ES File Explorer.



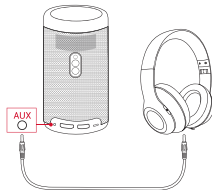
- Select videos or photos from the USB drive that you want to play, and press .
- Press  to stop playback.

### 3. Play Through External Sound Devices

This projector can also be connected to external sound output devices, including headphones and speakers; when connected to external speakers, the built-in speaker system is disabled.

To play sound through external sound devices:




- Use a 3.5mm audio cable or an adapter (not provided) to connect your headphones or external speakers.
- Connect the other end of the cable to the **AUDIO OUT** port on this projector.
  - You will hear audio from external devices.

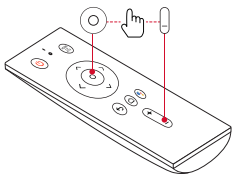


Note: Before connecting headphones and putting them on, turn down the volume to avoid hurting your ears.

## 4. Connect Bluetooth Accessories

You can connect Bluetooth devices to Nebula Capsule II.

- 1 Press  to access the home menu, select **[Settings]** > **[Remotes & Accessories]** and press .
- 2 Select **Add accessories**.
  - This projector will begin searching for accessories.
- 3 Press and hold  and volume - button on the remote control simultaneously to enter Bluetooth pairing mode.

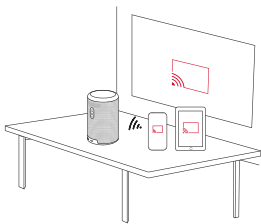



- 4 Follow the on-screen instructions to complete the Bluetooth connection.

Note: Before pairing your Bluetooth devices, make sure they are in pairing mode.

## 5. Use Chromecast Built-in

You can wirelessly cast photos, videos, and music from your phone or computer right to your Nebula Capsule II.



- 1 Play a YouTube video clip on your phone and then tap the cast icon  on the video screen.
- 2 Select the device "D2421" you want to cast to.
  - The projector will mirror the screen of the connected phone or computer.




Certain content may be unavailable to be casted due to copyright restrictions. In this case, you can stream the content via the same app installed on your Nebula Capsule II.

## 6. Enjoy Google Features

Nebula Capsule II also supports Google features. Once connected to a wireless network, you can go online and enjoy movies, music, and pictures, and web browsing. Aside from the pre-installed apps, you can also install additional apps from Google Play, and talk to the Google Assistant to do certain tasks.

To talk to the Google Assistant:

- ① Make sure you've followed the steps in the section "Connect Bluetooth Accessories" to connect your remote control to Nebula Capsule II. Once connected, the LED indicator on the remote control turns solid red.
- ② Press  on the remote control to talk to the Google Assistant.

## Specifications



Specifications and design are subject to change without notice.

Power supply: 15V  $\overleftrightarrow{}$  2A

Power consumption: < 20W

Standby power consumption: < 0.5W

Display technology: 0.3 in 1280 × 720p DLP

Light source: RGB LED

Projection image size: 20 - 100 in

Resolution: 1280 × 720p

Brightness: 200 ANSI Lumens

Contrast ratio: 600:1

Throw ratio: 1.3

Throw distance: 0.58m to 3.08m

CPU: Quad core A53

OS: Android TV 9.0

RAM: 2GB DDR

ROM: 8GB eMMC

Speaker drivers: 8W

Wi-Fi: IEEE802.11a/b/g/n Dual Frequency 2.4G / 5G

Bluetooth version: V4.2

USB file system: FAT32 / NTFS / exFAT

Built-in battery type: Li-Polymer

Capacity: 9700mAh 3.7V

Movie playtime: approximate 3 hours in battery mode

Recommended ambient: 41°F to 95°F / 5°C to 35°C


Relative humidity: 15% ~ 85% (non-condensing)

Storage temperature and humidity: 149°F / < 65°C, < 90% humidity

Dimensions (H × D): 150 × 80 mm / 5.9 × 3.1 inch


Weight: 740 g / 26.1 oz

## Troubleshooting

- ① Capsule II fails to power on using the remote control.
  - Press and hold ① for 2 seconds on the projector to turn it on.
  - When powered off, you cannot use the remote control to turn it on.
- ② The remote control doesn't work.
  - Make sure the battery is already installed in the remote control.
  - Replace the batteries.
- ③ Images become blurred.
  - Slightly move the projector to engage autofocus.
  - Press and hold  for 3 seconds to manually adjust the focus.
- ④ Capsule II is unable to connect to a Wi-Fi network.
  - Refresh the list of available networks and retry.
  - Reboot the wireless router or the device and retry.
- ⑤ How do I update firmware?
  - When a new version is detected you will be asked to reboot and update.

## Notice

### Declaration of Conformity

 This product complies with the radio interference requirements of the European Community. Hereby, Anker Innovations Limited, declares that this device is in compliance with the essential requirements and other relevant provisions of Directive 2014/53/EU. For the Declaration of Conformity, visit the Web site [www.SeeNebula.com](http://www.SeeNebula.com).  
RF exposure information: The Maximum Permissible Exposure (MPE) level has been calculated based on a distance of d=20 cm between the device and the human body. To maintain compliance with RF exposure requirements, use products that maintain a 20cm distance between the device and human body.

CAUTION RISK OF EXPLOSION IF BATTERY IS REPLACED BY AN INCORRECT TYPE. DISPOSE OF USED BATTERIES ACCORDING TO THE INSTRUCTIONS

Wifi Operating Frequency Range: 2412~2472 MHz (2.4G);  
5150~5250 MHz, 5725~5850 MHz (5G)

Wifi Max Output Power: 16.86 dBm (2.4G); 15.52 dBm (5G)

BT Operating Frequency Range: 2402~2480 MHz; BT Max Output Power: 9.68 dBm

5150~5250 MHz can be used indoor only.

	AT	BE	BG	HR	CY	CZ	DK
	EE	FI	FR	DE	EL	HU	IE
	IT	LV	LT	LU	MT	NL	PL
	PT	RO	SK	SI	ES	SE	UK

The following importer is the responsible party (contact for EU matters only)

Importer: Anker Technology (UK) Ltd

Importer Address: Suite B, Fairgate House, 205 Kings Road, Tyseley, Birmingham, B11 2AA, United Kingdom



Your product is designed and manufactured with high quality materials and components, which can be recycled and reused.



This symbol means the product must not be discarded as household waste, and should be delivered to an appropriate collection facility for recycling. Proper disposal and recycling helps protect natural resources, human health and the environment. For more information on disposal and recycling of this product, contact your local municipality, disposal service, or the shop where you bought this product.

### FCC Notice

This device complies with the FCC rules, Part 15. Operation is subject to the following two conditions: (1) This device may not cause harmful interference, and (2) This device must accept any interference received, including interference that may cause undesired operation.

**Warning:** Changes or modifications not expressly approved by the party responsible for compliance could void the user's authority to operate the equipment.

**Note:** This equipment has been tested and found to comply with the limits for a Class B digital device, pursuant to part 15 of the FCC Rules. These limits are designed to provide reasonable protection against harmful interference in a residential installation.

This equipment generates, uses and can radiate radio frequency energy and, if not installed and used in accordance with the instruction manual, may cause harmful interference to radio communications. However, there is no guarantee that interference will not occur in a particular installation. If this equipment does cause harmful interference to radio or television reception, which can be determined by turning the equipment off and on, the user is encouraged to try to correct the interference by one or more of the following measures:

- Reorient or relocate the receiving antenna.
- Increase the separation between equipment and receiver.
- Connect the equipment into an outlet on a circuit different from that to which the receiver is connected.
- Consult the dealer or an experienced radio/TV technician for help.

### RF Exposure Information(SAR)

The SAR limit of USA (FCC) is 1.6 W/kg averaged over one gram of tissue.

Device types D2421 (FCC ID:2AOKB-D2421) has also been tested against this SAR limit. The highest SAR value reported under this standard during product certification for use when properly worn on the body is 0.088W/kg.

### Notice: Shielded cables

All connections to other computing devices must be made using shielded cables to maintain compliance with FCC regulations.

The following importer is the responsible party.

Company Name: Fantasia Trading LLC

Address: 9155 Archibald Ave, Suite 202, Rancho

Cucamonga, CA 91730, USA

Telephone: 1-909-484-1530