

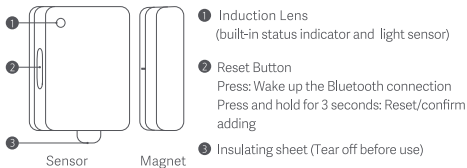
Mi Door and Window Sensor 2 User Manual



Product Overview

The Mi Door and Window Sensor 2 can be installed on doors, windows, drawers, etc. Through the proximity and separation of the sensor and the magnet, the opening and closing status of doors or windows is detected in real-time, and the light sensor detects the light intensity of the surrounding environment. Low power consumption, tool-free installation, and ready to be attached and used.

Note: This product is for indoor use only and needs to be connected to a Bluetooth gateway for smart control.



Note: When performing an OTA update to the Mi Door and Window Sensor 2, briefly press the reset button to wake up the Bluetooth connection. For detailed steps, please follow the instructions in the Mi Home app.

Connecting with Mi Home/Xiaomi Home App


This product works with the Mi Home/Xiaomi Home app*. Use the Mi Home/Xiaomi Home app to control your device, and to interact with other smart home devices.

Scan the QR code to download and install the app. You will be directed to the connection setup page if the app is installed already. Or search "Mi Home/Xiaomi Home" in the app store to download and install it.



* The app is referred to as Xiaomi Home app in Europe (except for Russia). The name of the app displayed on your device should be taken as the default.

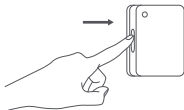
Adding a device

1. Open the Mi Home/Xiaomi Home app, and sign in to your account.
2. Tap + in the top right corner of the homepage in the app to enter the Add device page.
3. Tap  in the top right corner of the Add device page, scan the product's QR code and follow the instructions to complete adding the device and start using it.

Note: If the product's QR code cannot be scanned, you can search for the product name "Mi Door and Window Sensor 2" to complete adding it.

If it cannot be added, please try again after holding the phone as close to the sensor as possible.

Please install and secure the device once it has been added successfully.



Press and hold the reset button for 3 seconds until the indicator continuously blinks 3 times and then release it.

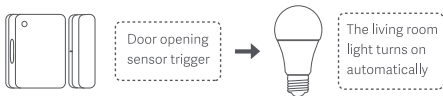
Note: The version of the app might have been updated, please follow the instructions based on the current app version.

Smart Scenes

This product can create smart scenes via the Mi Home/Xiaomi Home app to realize a connection with other smart devices.

Example of a smart scene:

When the door is opened at night, it triggers the door and window sensor, and the living room light turns on automatically.



When the window is opened to air the room, it triggers the door and window sensor, and the air purifier turns off automatically.



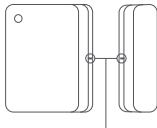
For more connection functions, tap + in the top right corner of the homepage in the Mi Home/Xiaomi Home app, and select the device as the trigger condition to create smart connection scenes according to the actual scenario.

Installation

1. Apply the adhesive stickers inside the bottom grooves of the sensor and the magnet respectively. Tear off the protective film from the adhesive stickers when installing.

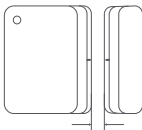


2. Align the marks on the side of the sensor unit and the side of the magnet as much as possible during installation.



Try to align the installation marks.

3. Attach the sensor and the magnet to the fixed side and the movable side of the area that can be opened and closed. It is recommended to install the sensor on the fixed surface and the magnet on the movable surface, and ensure the clearance between the two is less than 18 mm when the door or window is closed.



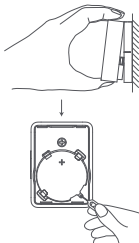
Ensure the clearance is less than 18 mm.

Note: The surface the adhesive sticker is applied to must be clean and dry. Please avoid dropping the sensor during installation, as it may easily damage the body of the sensor.

The installation clearance can be measured with the help of the scale on the back of the user manual.

Battery Replacement

1. Place your thumb in the groove of the body of the sensor and lift the body upward to separate it from the back cover.
2. Insert a pin or a similar tool into the hole and lift the battery upward to remove it.
3. Place the CR2032 battery in the battery slot with the positive terminal facing upwards.
4. Align the body of the sensor with the back cover and firmly press it to snap it into place.



Specifications

Name: Mi Door and Window Sensor 2

Model: MCCGQ02HL

Wireless Connectivity: Bluetooth 5.1 BLE

Operating Temperature: -10°C to 50°C

Battery Type: CR2032 (Installed)

Operation Frequency: 2402-2480MHz

Maximum Output Power: 10 dBm

FCC ID: 2ANJHMCCGQ02 HL

Item Dimensions: 34.0 × 32.7 × 14.5 mm

Operating Humidity: 0–95% RH, non-condensing

WARRANTY NOTICE

As a Xiaomi consumer, you benefit under certain conditions from additional warranties. Xiaomi offers specific consumer warranty benefits which are in addition to, and not instead of, any legal warranties provided by your national consumer law. The duration and conditions related to the legal warranties are provided by respective local laws. For more information about the consumer warranty benefits, please refer to Xiaomi's official website <https://www.mi.com/en/service/warranty/>. Except as prohibited by laws or otherwise promised by Xiaomi, the after-sales services shall be limited to the country or region of the original purchase. Under the consumer warranty, to the fullest extent permitted by law, Xiaomi will, at its discretion, repair, replace or refund your product. Normal wear and tear, force majeure, abuse or damage caused by the user's negligence or fault are not warranted. The contact person for the after-sale service may be any person in Xiaomi's authorized service network, Xiaomi's authorized distributors or the final vendor who sold the products to you. If in doubt please contact the relevant person as Xiaomi may identify. The present warranties do not apply in Hong Kong and Taiwan. Products which were not duly imported and/or were not duly manufactured by Xiaomi and/or were not duly acquired from Xiaomi or a Xiaomi's official seller are not covered by the present warranties. As per applicable law you

may benefit from warranties from the non-official retailer who sold the product. Therefore, Xiaomi invites you to contact the retailer from whom you purchased the product.

Regulatory Compliance Information

WEEE Information



All products bearing this symbol are waste electrical and electronic equipment (WEEE as in directive 2012/19/EU) which should not be mixed with unsorted household waste. Instead, you should protect human health and the environment by handing over your waste equipment to a designated collection point for the recycling of waste electrical and electronic equipment, appointed by the government or local authorities. Correct disposal and recycling will help prevent potential negative consequences to the environment and human health. Please contact the installer or local authorities for more information about the location as well as terms and conditions of such collection points.

EU Declaration of Conformity



Hereby, [Tianjin Hualai Technology Co., Ltd.] declares that the radio equipment type [MCCGQ02HL] is in compliance with Directive 2014/53/EU. The full text of the EU declaration of conformity is available at the following internet address:
<http://www.mi.com/global/service/support/declaration.html>

UK Declaration of Conformity



Hereby, [Tianjin Hualai Technology Co., Ltd.] declares that the radio equipment type [MCCGQ02HL] is in compliance with Radio Equipment Regulations 2017 . The full text of the UK declaration of conformity is available at the following internet address:
<https://www.mi.com/uk/service/support/declaration.html>



This device complies with part 15 of the FCC Rules. Operation is subject to the following two conditions:
(1) This device may not cause harmful interference, and (2) this device must accept any interference received, including interference that may cause undesired operation.

Note:

This equipment has been tested and found to comply with the limits for a Class B digital device, pursuant to Part 15 of the FCC Rules. These limits are designed to provide reasonable protection against harmful interference in a residential installation. This equipment generates, uses and can radiate

radio frequency energy and, if not installed and used in accordance with the instructions, may cause harmful interference to radio communications. However, there is no guarantee that interference will not occur in a particular installation. If this equipment does cause harmful interference to radio or television reception, which can be determined by turning the equipment off and on, the user is encouraged to try to correct the interference by one or more of the following measures:

Reorient or relocate the receiving antenna.

Increase the separation between the equipment and receiver.

Connect the equipment into an outlet on a circuit different from that to which the receiver is connected.

Consult the dealer or an experienced radio/TV technician for help.

Please take attention that changes or modification not expressly approved by the party responsible for compliance could void the user's authority to operate the equipment.

To satisfy FCC RF exposure requirements, a separation distance of 20 cm or more should be maintained between the antenna of this device and persons during device operation.

To ensure compliance, operations at closer than this distance is not recommended.



The Bluetooth® word mark and logos are registered trademarks owned by Bluetooth SIG, Inc. and any use of such marks by [Xiaomi Inc.] is under license. Other trademarks and trade names are those of their respective owners.

- Do not replace a battery with an incorrect type.
- Disposal of a battery into fire or a hot oven, or mechanically crushing or cutting of a battery, that can result in an explosion.
- Leaving a battery in an extremely high temperature surrounding environment that can result in an explosion or the leakage of flammable liquid or gas.
- A battery subjected to extremely low air pressure that may result in an explosion or the leakage of flammable liquid or gas.



CAUTION

Risk of explosion if the battery is replaced by an incorrect type.

Dispose of used batteries according to the instructions.

Do not ingest battery, Chemical Burn Hazard.

This product contains a coin/button cell battery. If the coin/button cell battery is swallowed, it can cause severe internal burns in just 2 hours and can lead to death.

Keep new and used batteries away from children.

If the battery compartment does not close securely, stop using the product and keep it away from children.

If you think batteries might have been swallowed or placed inside any part of the body, seek immediate medical attention.

Manufactured for: Xiaomi Communications Co., Ltd.

Manufactured by: Tianjin Hualai Technology Co., Ltd.

(a Mi Ecosystem company)

Address: 8/F, Huaqiao Chuangye Building, No.10 Jinping Road, Ya'an Road, Nankai District, Tianjin, China

For further information, please go to www.mi.com

User Manual Version: V1.0